

Criteria and Suggested Map Elements for Trustee Area Creation

Chico Unified School District

All Chico USD Trustee Areas will contain an approximately equal number of persons (+/- 5%) as recorded in the 2020 United States Census.

Areas will also comply with the Federal Voting Rights Act and will not be drawn with race as the predominant factor while still acknowledging natural geographic concentrations of significant populations within a protected class.

Finally, Chico USD's Trustee Areas will be as compact and contiguous as possible while satisfying other desired criteria.

Please use the space below to provide criteria that you believe should be used (or should not be used) when creating trustee area maps.

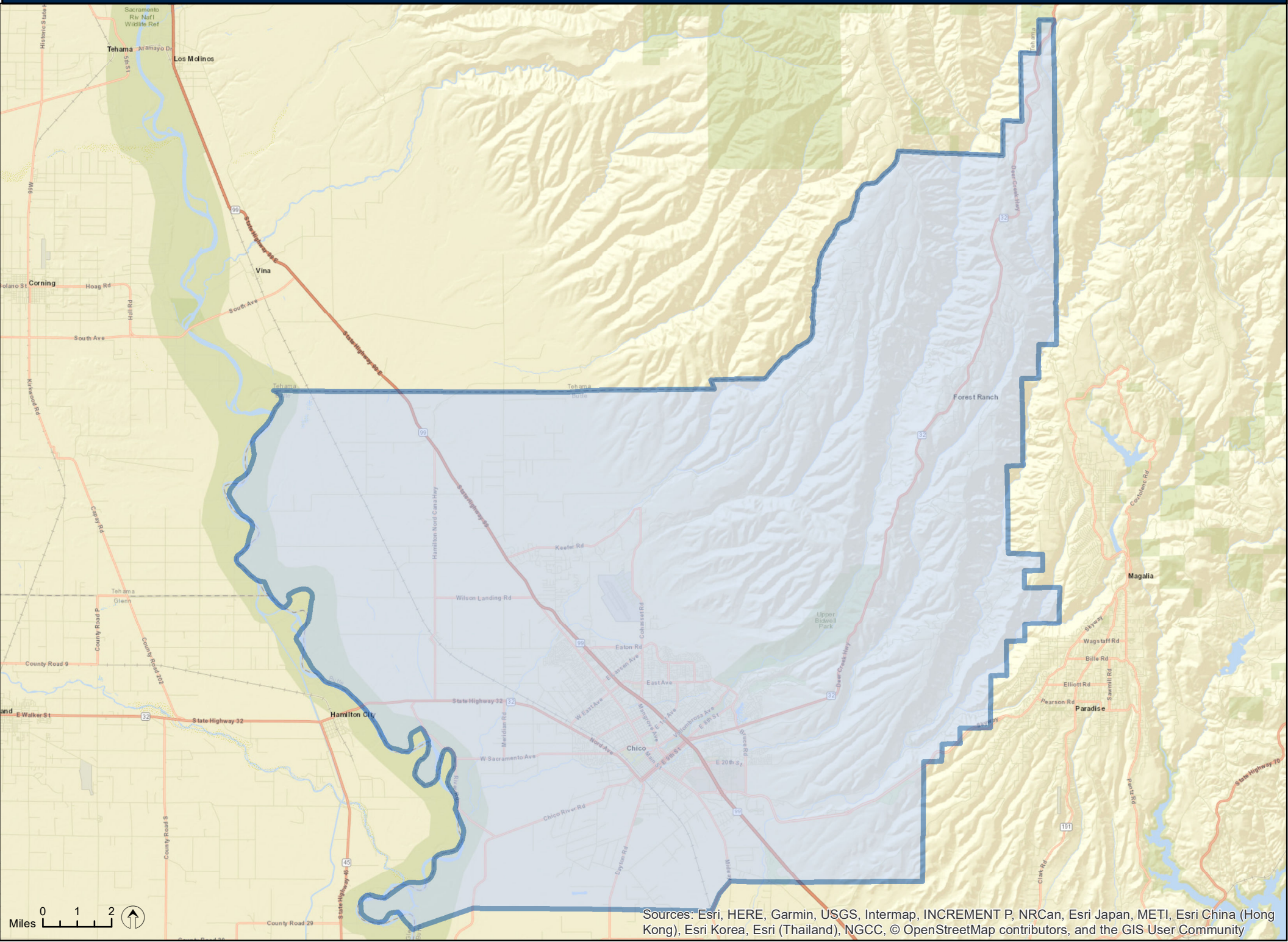
Criterion	Very Important	Somewhat Important	Not Important

Maps are available that can be used to suggest Trustee Areas or to help identify communities of interest.

What other information or perspective do you want to provide?

Public Outreach Map

Chico Unified School District



Sources: Esri, HERE, Garmin, USGS, Intermap, INCREMENT P, NRCan, Esri Japan, METI, Esri China (Hong Kong), Esri Korea, Esri (Thailand), NGCC, © OpenStreetMap contributors, and the GIS User Community

Detailed Public Outreach Map

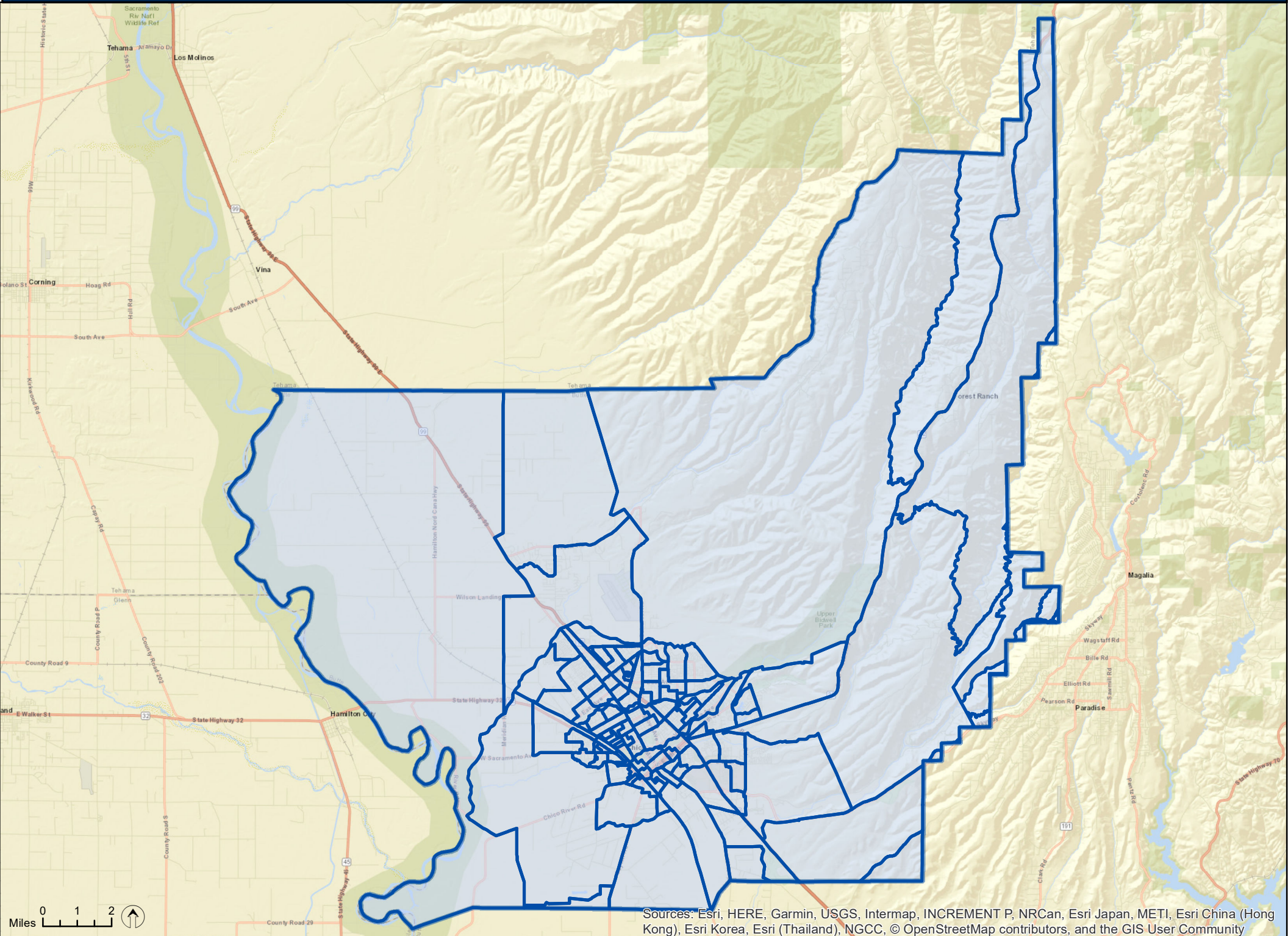
Chico Unified School District



Sources: Esri, HERE, Garmin, USGS, Intermap, INCREMENT P, NRCan, Esri Japan, METI, Esri China (Hong Kong), Esri Korea, Esri (Thailand), NGCC, © OpenStreetMap contributors, and the GIS User Community

Public Outreach Map with Census Block Groups

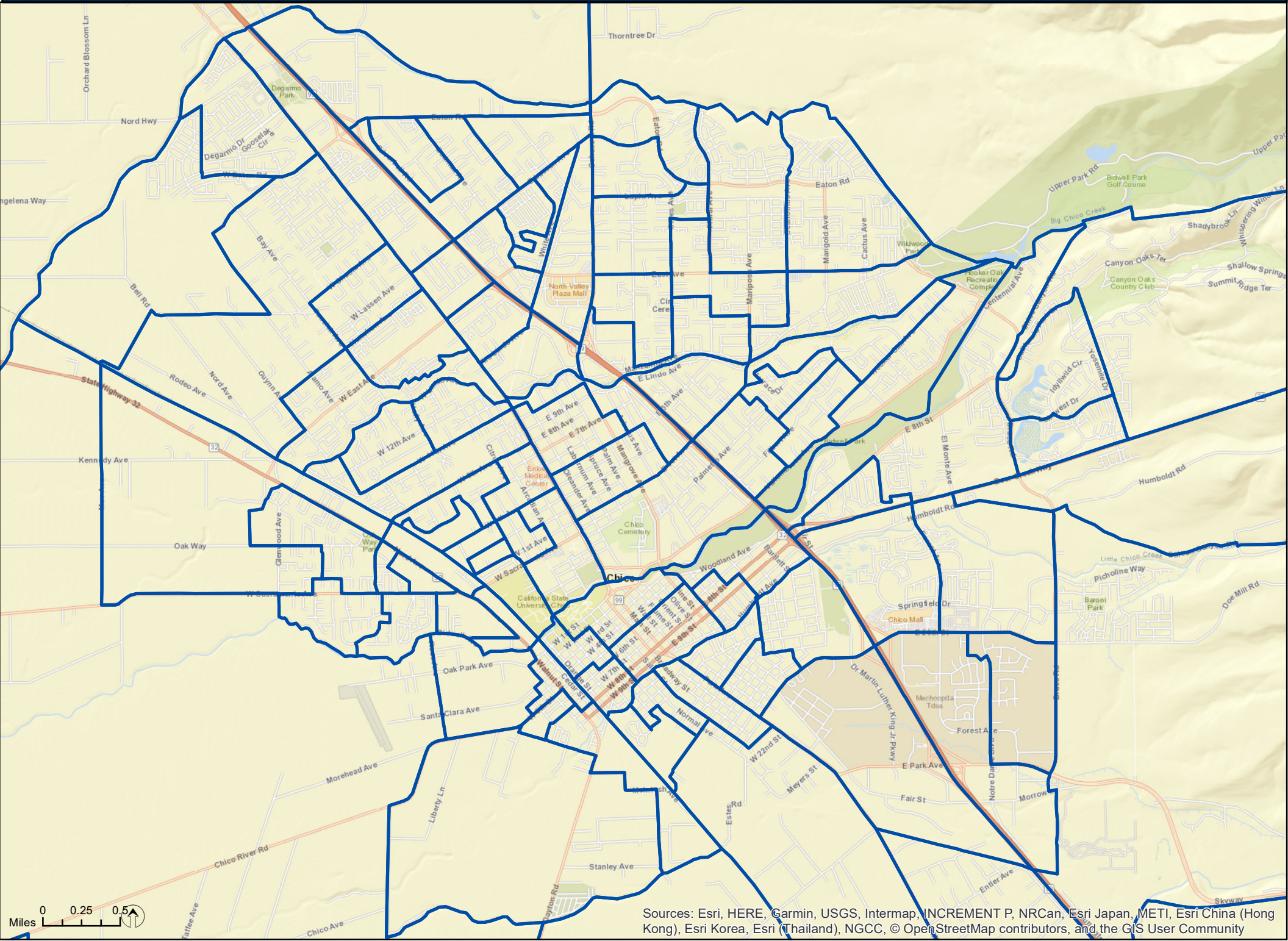
Chico Unified School District



Sources: Esri, HERE, Garmin, USGS, Intermap, INCREMENT P, NRCan, Esri Japan, METI, Esri China (Hong Kong), Esri Korea, Esri (Thailand), NGCC, © OpenStreetMap contributors, and the GIS User Community

Detailed Public Outreach Map with Census Block Groups

Chico Unified School District



Sources: Esri, HERE, Garmin, USGS, Intermap, INCREMENT P, NRCan, Esri Japan, METI, Esri China (Hong Kong), Esri Korea, Esri (Thailand), NGCC, © OpenStreetMap contributors, and the GIS User Community